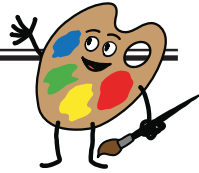


Who was Barking Abbey built for?



History defenders, we need you! This is your chance to create something important that celebrates your town's history.

Design a piece of commemorative art which features the Curfew Tower as a focus.



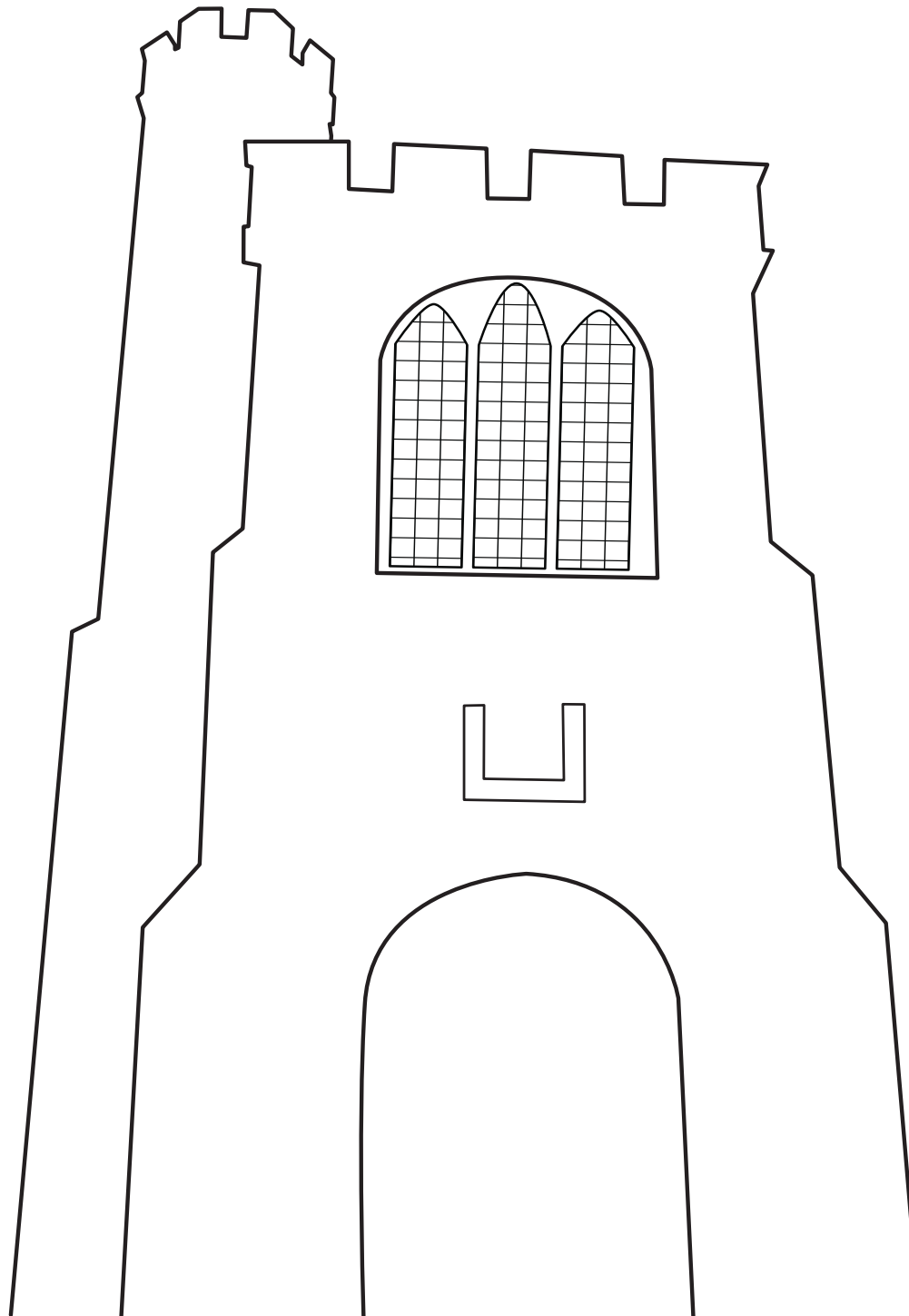
You could include:

- A drawing of the tower.
- Reference to its history as a part of the abbey.
- Henry VIII's decision to destroy the abbey.
- The coat of arms for Barking and Dagenham.
- Words that sum up the impact the abbey had on the people who lived in the area.
- Information about its past.
- Why this tower is important and should be protected.

The commemorative art should educate visitors to the area about the tower and its connection to the past.





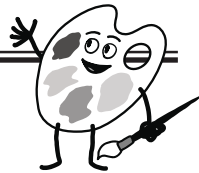


? Who was Barking Abbey built for?



History defenders, we need you! This is your chance to create something important that celebrates your town's history.

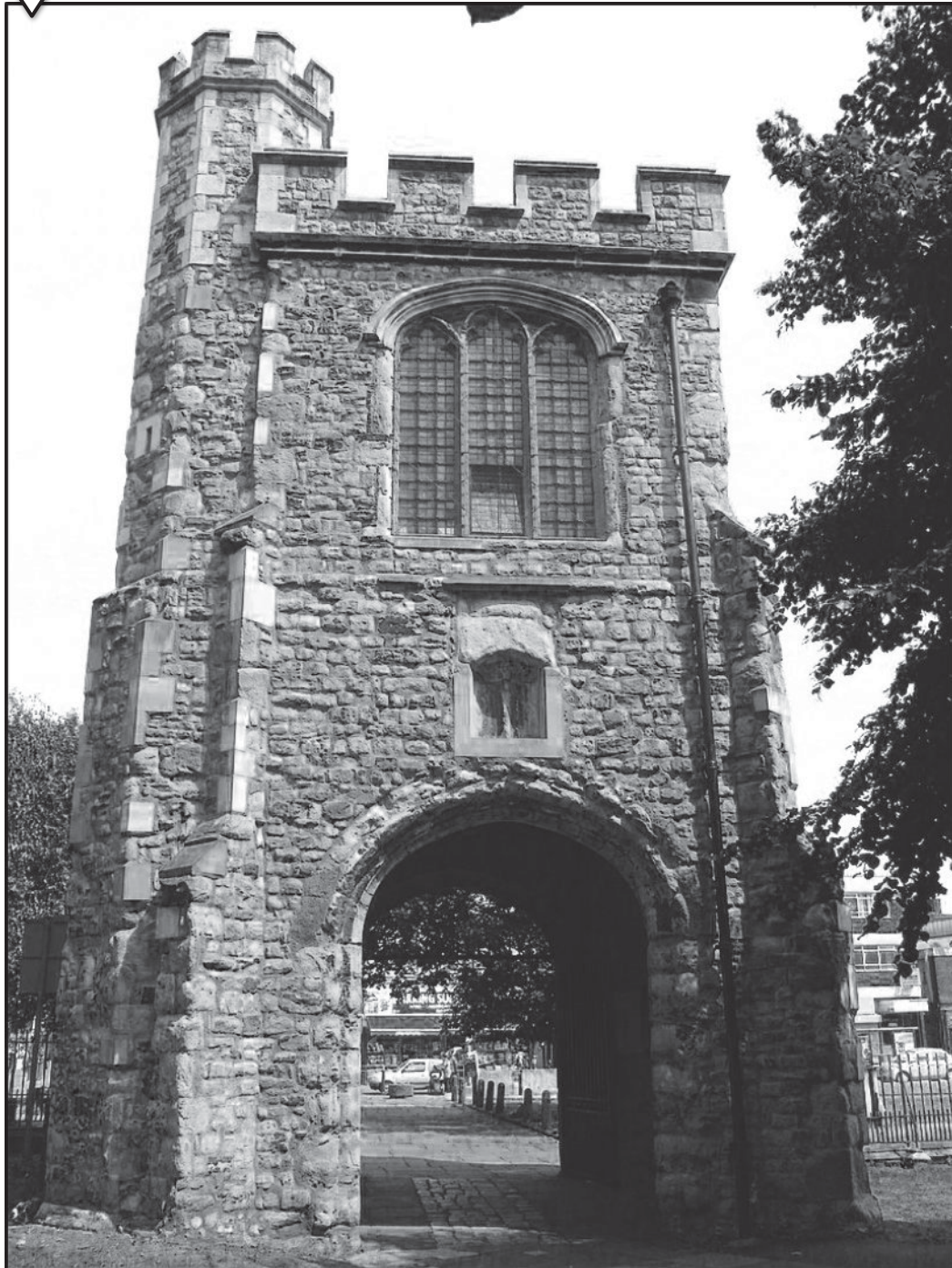
Design a piece of commemorative art which features the Curfew Tower as a focus.



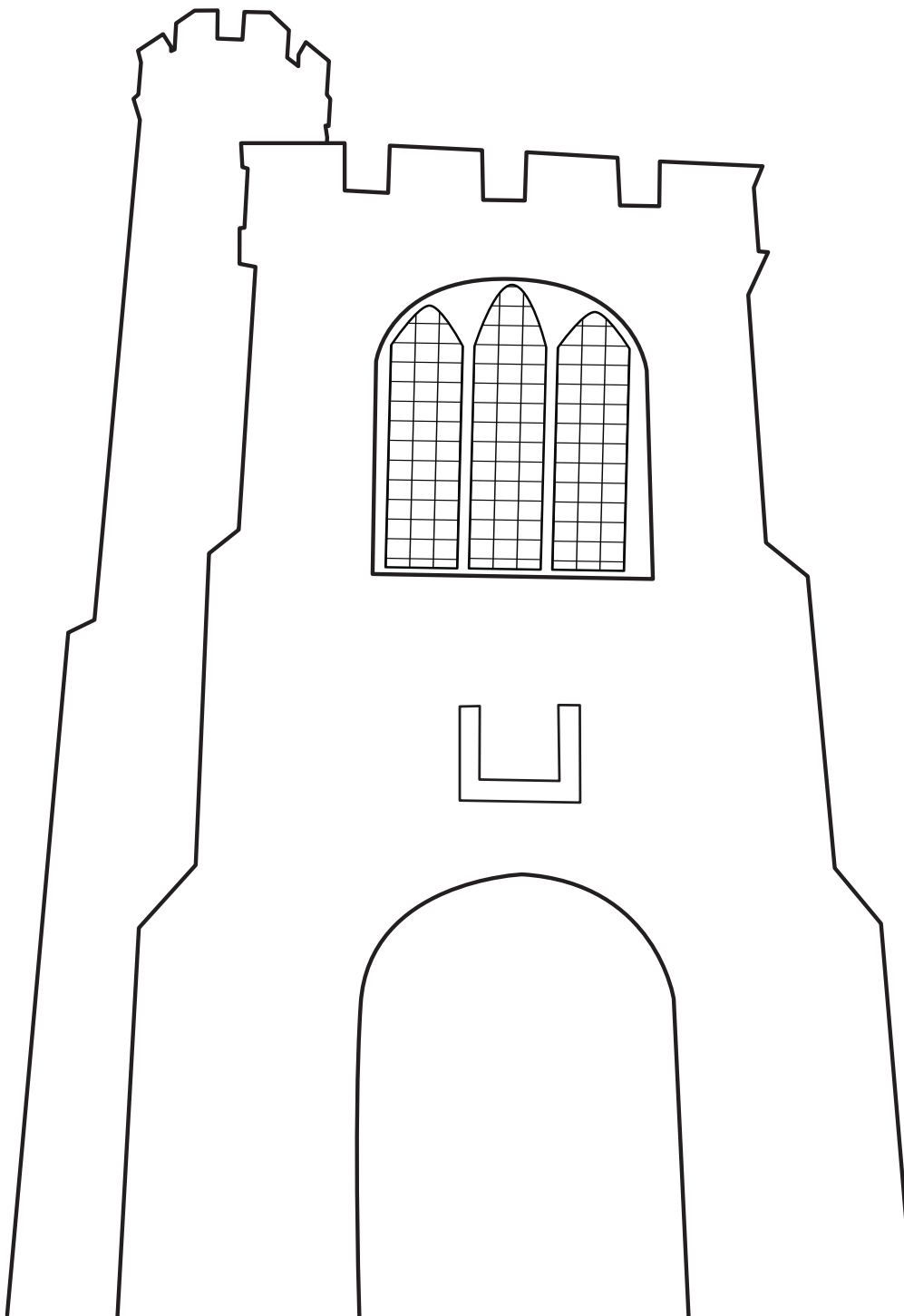
You could include:

- A drawing of the tower.
- Reference to its history as a part of the abbey.
- Henry VIII's decision to destroy the abbey.
- The coat of arms for Barking and Dagenham.
- Words that sum up the impact the abbey had on the people who lived in the area.
- Information about its past.
- Why this tower is important and should be protected.

The commemorative art should educate visitors to the area about the tower and its connection to the past.







Local History

Historic England and Teacher's Pet have come together to bring you a collection of free resources that you can use in your local history teaching.



Historic England



Teacher's Pet

Who are Teacher's Pet?

Teacher's Pet have been providing downloadable and playable educational content to early years and primary school teachers for over 14 years. We cover all areas of the curriculum and use a team of in-house teachers and designers to create engaging and memorable concepts, that the children will love.

Why local history?

At [Teacher's Pet](#) we want to empower primary school teachers by giving them the tools they need to deliver inspiring and thoughtful lessons about the local area and its history. We believe local history teaching has such an important part to play in a child's wellbeing – helping to give children a sense of pride in where they live.

Our Local History project is designed to provide teachers across the UK with everything they need to successfully carry out a full scheme of teaching about their local area, through key enquiry questions and source led activities.

Working with [Historic England](#) gives us access to archived maps and photos for resources and information from knowledgeable local historians, as well helping us to provide the content to you free of charge.

For more information about our Local History project or to find out more about Teacher's Pet Classroom Resources, please visit our website.